

East/West mounting system with portrait module installation

Ideal space utilisation thanks to portrait module arrangement

Fast & accurate installation guaranteed thanks to form-fit components

No special tools needed for installation

Prevents vegetation if system is installed on top of green roof

Integrated cable duct

No roof penetration, large area for ballasting

Module clamps at the right position

Portrait installation offers advantages!

Thanks to the portrait arrangement of the modules, the available roof space can be optimally utilised with the **FORMSOL²⁶⁰** PV mounting system. Despite this space-saving arrangement, a narrow service path provides easy access to the modules without having to walk over them. The panels are clamped to the lateral mounting points and fewer rails are required in comparison to a landscape module arrangement.

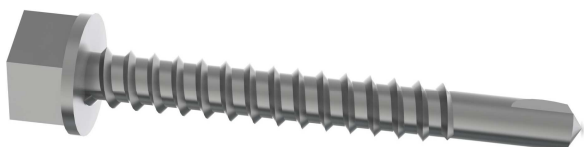
Keep it simple

The **FORMSOL²⁶⁰** elements made of recycled plastic are installed in such a way that they overlap each other. This installation method enables quick and easy installation of the supporting construction without the need for levelling, which guarantees accuracy.

The cable duct is already integrated in the supporting element and does not need to be installed separately. Thanks to the small number of total parts, warehousing and logistics are kept simple.

One is sufficient

The system needs just a single screw and can be installed quickly with no special tools.



Our innovation for your success

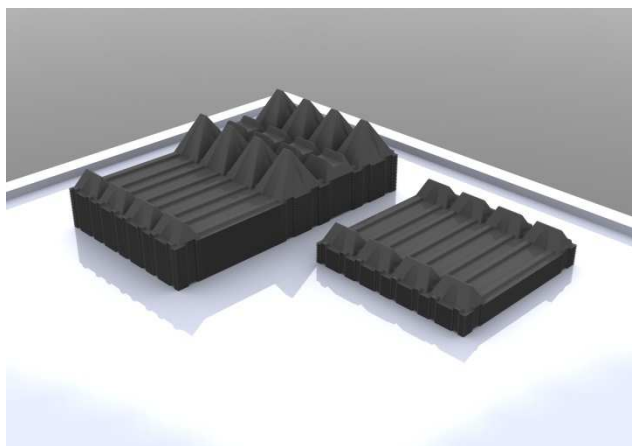
The functional principle of **FORMSOL²⁶⁰** is unique and patent-pending. The inexpensive system combined with its extremely fast installation make the **FORMSOL²⁶⁰** the perfect choice – and offer you a big advantage.

FORMSOL²⁶⁰ offers an aesthetic mounting solution for optimum space utilisation and fast installation.

- *Space-saving, portrait module layout*
- *Very easy installation*
- *No special tools required*
- *Accurate installation guaranteed thanks to form-fit components*

Small on the truck – big on the roof!

Since the PE elements can be stacked, the space required for transportation is reduced to a minimum. Large systems can be realised with just a few elements.

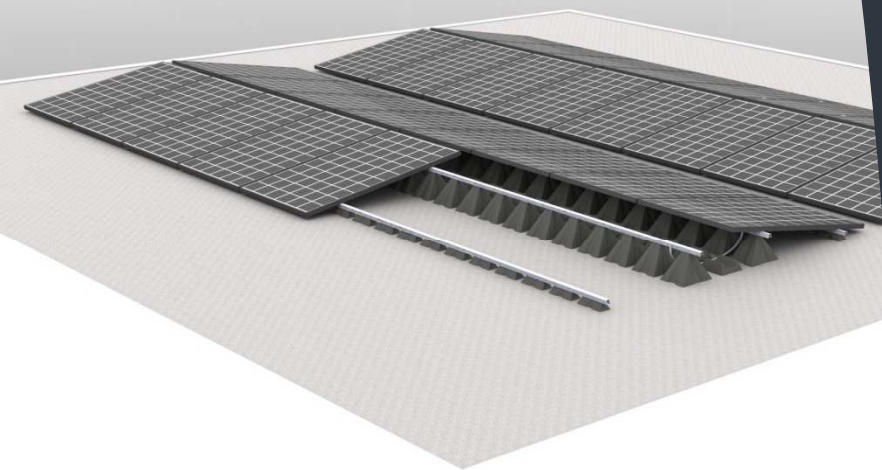


No roof penetration & flexible

No roof penetrations are necessary with the **FORMSOL²⁶⁰** mounting system – it can be weighed down using garden slabs or gravel. Thanks to the large elements, there are no concentrated loads. Significant ballasting can be achieved with just a thin layer of gravel. The field width is variable. In the case of smaller roof structures such as sanitary pipes, the elements can be cut to size easily and quickly using a jigsaw.

Avoiding vegetation

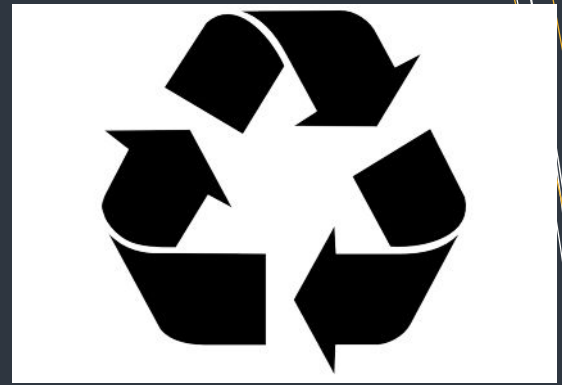
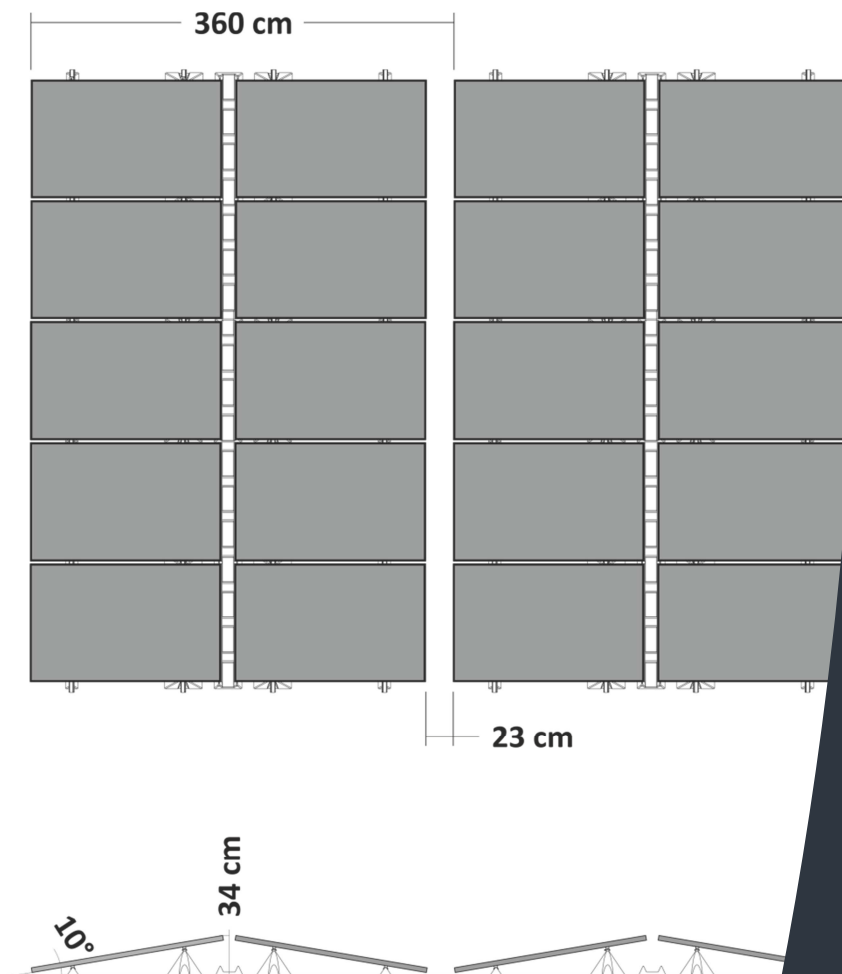
The **FORMSOL²⁶⁰** system can be installed over the entire area of a green roof. This prevents vegetation from reducing the yield of the PV system without having to elaborately remove the roof vegetation.



FORMSOL²⁶⁰ – optically inconspicuous

The FORMSOL²⁶⁰ mounting system enables an aesthetically clean integration of the photovoltaic system on the flat roof. Thanks to the overlapping tips, the rows are always perfectly aligned.

Installation Drawing



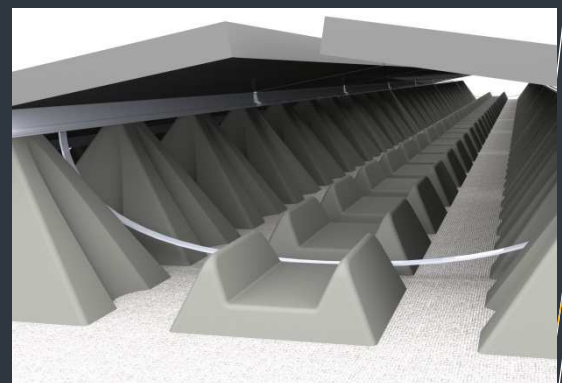
PE element made of recycled plastic

- Only recycled plastic is used
- Weather-resistant and robust
- Indefinitely recyclable



Simple & clever

- The “wings” position the rails automatically on the tips
- The self-tapping screw penetrates the rail and tips on both sides and can thereby withstand even high pull-out forces



Practical

- The cable duct is integrated in the elements



Advice / Support / Sales

For questions, planning, quotations and sales of the **FORMSOL²⁶⁰** mounting system, we will be happy to assist.

With **FORMSOL¹⁶⁰** we offer you an elegant solution for a South-facing module layout. Ask us!

PV Integ AG – Innovation from Switzerland!

PV Integ AG, headquartered in Central Switzerland, develops and sells mounting systems for PV modules. The company can count on the extensive experience of its staff and a loyal customer base.

We believe that if module prices continue to fall, the mounting systems for PV installations will become increasingly important – not only in terms of purchasing but roof area utilisation, transportation, installation time and aesthetics.

Due to our proximity to the PV market, we know the needs of installers and can meet them appropriately. When doing so, we are never satisfied with the existing solution but, instead, continuously develop our products. At the same time, it is important to us to offer a sophisticated solution for the “little things” such as cable routing, lightning protection, packaging and transportation.



PV Integ AG Tel.: +41 (0)41 310 50 30
Reussstrasse 7 E-mail: info@pvinteg.ch
6038 Gisikon Web: www.pvinteg.ch

Your sales partners